

LONDON VENUES

Elizabeth & Wine works with a carefully-selected cohort of leading UK venues for hospitality, unforgettable experiences and days out. Each venue has been handpicked on the basis of quality, location and availability, offering the perfect backdrop for your E&W experience.

Venues listed in order of capacity.



LISBOETTA

30 Charlotte St, London, W1T 2NG

Capacity: Seated - 10

Lisboeta, a lively Fitzrovia restaurant led by Chef Nuno Mendez, honors Lisbon's essence. "Lisboeta," meaning 'a person from Lisbon,' encapsulates the London lifestyle. Adega, the lower-level private dining space adjoining the wine cellar, is perfect for intimate group gatherings.



BANCONE

39 William IV St, London, WC2N 4DD | 8-10 Lower James St, London, W1F 9EL

Capacity: Seated - from 10 to 14

Bancone is an exciting restaurant group in London founded in 2018 and have two beautiful venues in Covent Garden and Golden Square in Soho. The focus is on handmade pasta and they style is buzzy, informal and relaxed. View sample menus [here](#).



NESSA

86 Brewer St, London, W1F 9UB

Capacity: Seated - 14

Nessa in Soho comes from the people behind Mortimer House in Fitzrovia who brought in chef Tom Cenci to run the kitchen. Billed as a neighbourhood bistro, you'll find European bistro food with a few very specific British influences peppered throughout the menu. View menus and information [here](#)



LINA STORES DELICATESSEN

18 Brewer St, London, W1F 0SG

Capacity: 10

Established in 1944, this Italian delicatessen, named after its founder "Lina" from Genova, has been thriving for over 75 years. Specializing in high-quality, authentic Italian produce, from fresh pasta to panini, they offer a diverse range of cured meats, cheeses, and antipasti to provide guests with the best of Italy. View more information [here](#).



LINA STORES BLOOMBERG ARCADE

19 Bloomberg Arcade, London, EC4N 8AR

Capacity: Standing - 60 | Seated - 40

In the City, Lina Stores is the perfect location for an Italian celebration and can host parties of up to 40 guests on the Mezzanine level.

The Festa da Lina menu showcases some of their most-loved Italian dishes.



LADY OF THE GRAPES

16 Maiden Ln, London, WC2E 7NJ

Capacity: Standing - 35 | Seated - 20

Lady of the Grapes in Covent Garden is a charming wine bar and restaurant, founded by Carole Bryon. It highlights wines by female winemakers, and the kitchen, led by chef Victor Garvey, serves authentic French-inspired dishes with seasonal, artisan ingredients. Ideal for a delightful takeover, the venue exudes charm with its walls of wine.



THE GREENHOUSES

1 Marylebone Rd, London, NW1 4AQ

Capacity: Seated - from 6 - 22 | Standing - from 35 to 48

A sanctuary away from the hustle and bustle, The Greenhouses (The Albany, The Devonshire, The Portland and The Regency) are each designed with a unique floral backdrop. With foliage and twinkling lights, they make the perfect dining experience. Available to book in all seasons, each private dining space is heated come winter and kept cool during the warm summer months. View [drinks menu](#) and [sample menu](#).



THE HOXTON

199-206 High Holborn, London, WC1V 7BD

Capacity: Seated - from 18 - 36 | Standing - from 25 to 35

The Hoxton, Holborn hotel is a buzzing home in the heart of London, a stone's throw from the West End. Covent Garden, Oxford Street and the British Museum are all in easy walking distance from the hotel, along with great local eateries and some of the city's most charming old streets. With The Living Room, The Parlour and The Dining Room. View [menus](#).



THE IVY CITY GARDEN

Dashwood House, 69 Old Broad St, London, EC2M 1QS

Capacity: Garden Room: Seated - Round 32 | Long 24 | Standing - 50

The Oasis Bar: Standing - 75

The Ivy City Garden brings relaxed, sophisticated all-day dining to the historic Bishopsgate area. From great British classics to Asian-inspired cuisine and fantastic vegan and vegetarian dishes you'll find something for everyone to love right in the heart of The City of London. Menus from £65pp and view the [brochure](#).



BACCHANALIA

1-3 Mount St, London, W1K 3NB

Capacity: Artemis: Seated - 20 | Standing - 40 | Mezzanine: Seated - 45 | Standing - 80

Bacchanalia, owned by Richard Caring, is an extravagant restaurant that doesn't hold back. Upon entering, you'll encounter a space adorned with galloping unicorns, complemented by a Greek-inspired menu. The overall atmosphere is the main attraction at Bacchanalia. Lunch/dinner [menu](#), canapé [menu](#) and more [information](#).



14 HILLS, CITY

14th floor, 120 Fenchurch St, London, EC3M 5AL

Capacity: Seated - 22 | Standing - 25

Situated on the 14th floor of 120 Fenchurch Street, 14 Hills is composed of a glamorous restaurant with unparalleled views of London.

View menus and information [here](#).



CAFÉ MURANO PASTIFICIO

34 Tavistock St, London, WC2E 7PB

Capacity: Standing - 20 | Seated - 14

Hidden away in London's Covent Garden, Angela Hartnett's private dining room/former pasta shop/ Italian deli has turned into a great private dining space that is cosy and intimate – perfect for smaller groups.



QUO VADIS

26-29 Dean St, London, W1D 3LL

Capacity: Seated - up to 34 | Standing - up to 45

Quo Vadis is a historic Soho restaurant and members' club with a colourful past and a timeless allure. Formerly a brothel and a home to Karl Marx, the Great Dame of Dean Street continues to draw an eclectic and epicurean crowd, attracted to the good things in life. The rooms are equally suited to intimate dinners, louche cocktail receptions or relaxed yet distinctive product or book launches. View brochure [here](#)



THE SUTTON ARMS

6 Carthusian St, Barbican, London, EC1M 6EB

Capacity: Reception - 30 | Seated - 25 | Audio available

A charming pub with a lovely 'Wine Room' on the first floor, offering a classic dining experience with global wines, craft beers, and British cheeses. The Wine Room accommodates up to 30 people for drinks or 25 for sit-down occasions.



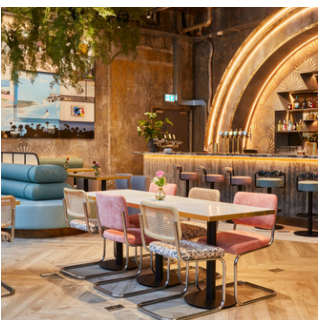
BOCCO DI LUPO

12 Archer St, London, W1D 7BB

Capacity: Standing - 40 | Seated - 22

Opened in 2008 by Kenedy and Hugo, Bocca di Lupo is celebrated for its authentic Italian cuisine in a glamorous yet humble trattoria setting. Despite its family-owned, small-scale charm, it's garnered awards. Reservations are challenging for regular customers, making it an appealing choice for corporate events.

View the [brochure](#).



PARADISE GREEN

100 Bishopsgate, London, EC2M 1GT

Capacity: Standing - 60 | Caberet - 40 | Long Table - 26

A modern art-led restaurant in Liverpool Street's 100 Bishopsgate, draws inspiration from Surfers Paradise. The private dining area showcases Lucy Sparrow's Billion Dollar Bank Robbery artwork, offering a distinctive and immersive midnight heist experience.

View the [menus and brochure](#).



MOUNT STREET

First Floor, 41-43 Mount St, London, W1K 2RX

Capacity: Seated - up to 28 | Standing - up to 50

This new, London restaurant, located on the first floor of iconic Mayfair landmark, brings together food and drink, craftsmanship and culture. One of the most unique restaurants in Mayfair. Designed by Studio Laplace, headed by Christophe Comoy and Luis Laplace, and design whilst allowing the site-specific artists' commissions to take centre stage.

View brochure [here](#)



THE WATERHOUSE PROJECT

1 Corbridge Cres, Cambridge Heath, London, E2 9DT

Capacity: Seated - 40

Gabriel Waterhouse's Water House Project began as a supper club, evolved into a pop-up restaurant, and now resides in a permanent location in Bethnal Green. The restaurant, influenced by Nordic cuisine, offers a monthly-changing tasting menu, maintaining its supper club roots. Located in the trendy food hub of East London, it provides an upscale dining experience with exquisite food. View [menu](#) and [brochure](#).



MANDARIN ORIENTAL HYDE PARK

66 Knightsbridge, London, SW1X 7LA

Capacity: Standing - 60 | Seated - 40

A grand 5-star hotel that offers exceptional dining and Hyde Park views. A remarkable venue for theatrical food experiences with live food stations available (from £32pp). An iconic venue that served as the SAS headquarters after World War II. Madame Vacani, taught dance to Queen Elizabeth II and Princess Margaret in the ballroom. View [photos](#) and [floorplans](#).



MR FOGGS RESIDENCE

15 Bruton Ln, London, W1J 6JD

Capacity: from 20 - 150

A place of wonder and imagination, Phileas J. Fogg welcomes you through the doors to this adventurous abode in the heart of Mayfair. Enter the famous Drawing Room and indulge in a worldly list of libations amongst a breathtaking backdrop of memorabilia collected from across the globe. View [menu](#) and [floorpan](#).

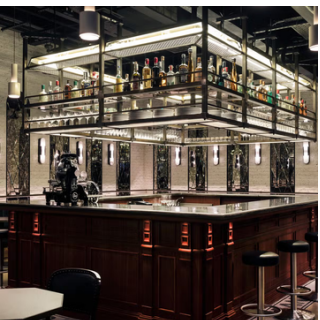


FRANCOS

61 Jermyn St, St. James's, London, SW1Y 6LX

Capacity: One Long Table: 34 | Cabaret - 50

Franco's, a pioneer among London's Italian restaurants, has been a St James's community fixture since 1945. With over 75 years of service, Head Chef Stefano Turconi skillfully incorporates inspiration and ingredients from across Italy into the heart of St James's, London.



FRANKS AT MAISON FRANCOIS

34 Duke Street St James's, St. James's, London, SW1Y 6DF

Capacity: Seated - 35 | Standing - 65

Mayfair's Maison Francois features Frank's, a flexible basement bar perfect for diverse corporate events. With a capacity for 65 standing or 35 seated. View sample [menu](#).



CARAVAN

22 Bloomberg Arcade, London, EC4N 8AR

Capacity: 40

The Mezzanine at Caravan is located in Bloomberg arcade, minutes from Bank, Cannon Street, and Mansion House stations, Caravan offers a very relaxed and casual vibe. View [menu](#).



VINTY & MERCER, CITY

19-20 Garlick Hill, London, EC4V 2AU

Capacity: The Library: Seated - 32 | Standing - 35

The Drawing Room: Seated - 10 | Standing - 25

The Music Room: Seated - 10

The Library: Casual space for 35 with a design reflecting London's trading history. View Library menus and information [here](#).



The Drawing Room: Intimate setting for 20 standing, featuring wine-red walls and a bold City print. View Drawing Room menus and information [here](#).

The Music Room: With vibrant teal blue wall panels adorned with iconic British album covers, ideal for intimate meetings of up to 10 people.

View Music Room menus and information [here](#)

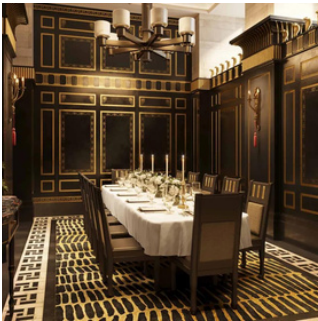


COVENT GARDEN HOTEL

10 Monmouth St, London, WC2H 9HB

Capacity: Seated 48 | Standing - 70

Covent Garden Hotel is situated in the heart of the theatre district and is just a short walk to the Royal Opera House, Soho and within easy reach of the city's business centre.



THE WOLSELEY CITY

68 King William St, London, EC4N 7HR

Capacity: up to 24

The Wolseley City brings a sense of familiarity and timeless elegance to the London Square Mile. The Clement and Lombard rooms accommodate up to 24 guests in one elegant space. This is a brand new restaurant and well worth a visit.

View room layout [here](#) and brochure [here](#)



THE LIBERTINE

1 Royal Exchange, London, EC3V 3LL

Capacity: Seated - up to 68 | Standing - up to 120

In the city, under The Royal Exchange are the vaults.

The Libertine is the new home of indulgence in the heart of the city.

View brochure [here](#)